

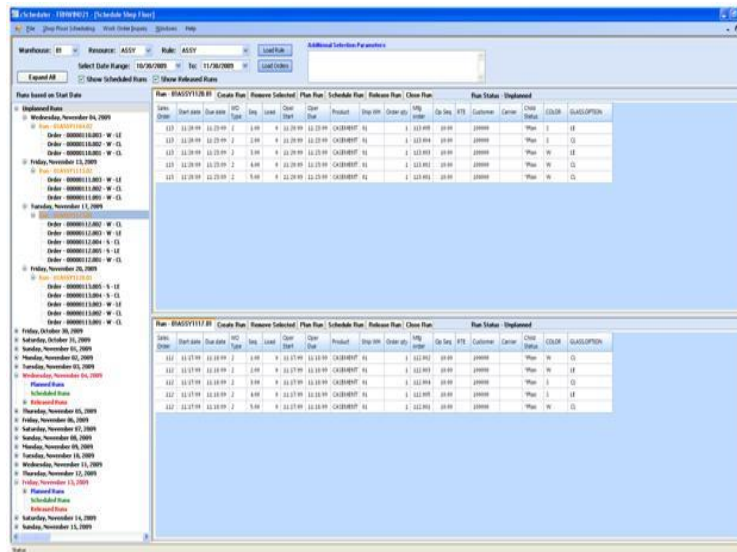


# Introducing c-Scheduler

November 3, 2009

An alternative to scheduling your shop floor. Benefits include:

- o One application that supports Frontier releases 2.0 through 2.2
- o Fast and efficient
- o Does not require Websphere application server
- o Extremely intuitive
- o Excellent help documentation
- o Multi-level Work Order Inquiry within the application
  - Allows checking of configured component status
  - Displays configuration variables and values within the same window
- o Ability to work with multiple schedules at one time
- o Ability to tie user written job streams to a configuration rule.
- o Ability to test a configuration rule prior to deploying



Currently in Beta testing ... expected general availability 11/16/09



**We are currently setting up private demonstrations so we can discuss your company's specific requirements/desires ... to schedule your own demo, please call 817-431-0404 or [e-mail](#) us**

**IMPORTANT ANNOUNCEMENT REGARDING WEBSHERE COMPATIBILITY ISSUES**

During recent WebSphere upgrades provided to our customers, we encountered compatibility problems between latest IBM WebSphere® patches and older versions of Frontier iProducts. Please contact [CBMCG](#) for details.

CBMCG provides the highest level of quality consulting services to our clients by working closely with our clients, employing experienced industry business consultants and leveraging strategic partnerships across all technological platforms.

**CBMCG – Where integrity and competency come together!**

---

CBMCG

9740 Corral Drive

Keller, TX 76248

Phone 817-431-0404

Fax 817-431-0505